



Transforming southern African cities in a changing climate

Leading Integrated Research in Africa (LIRA) 2030



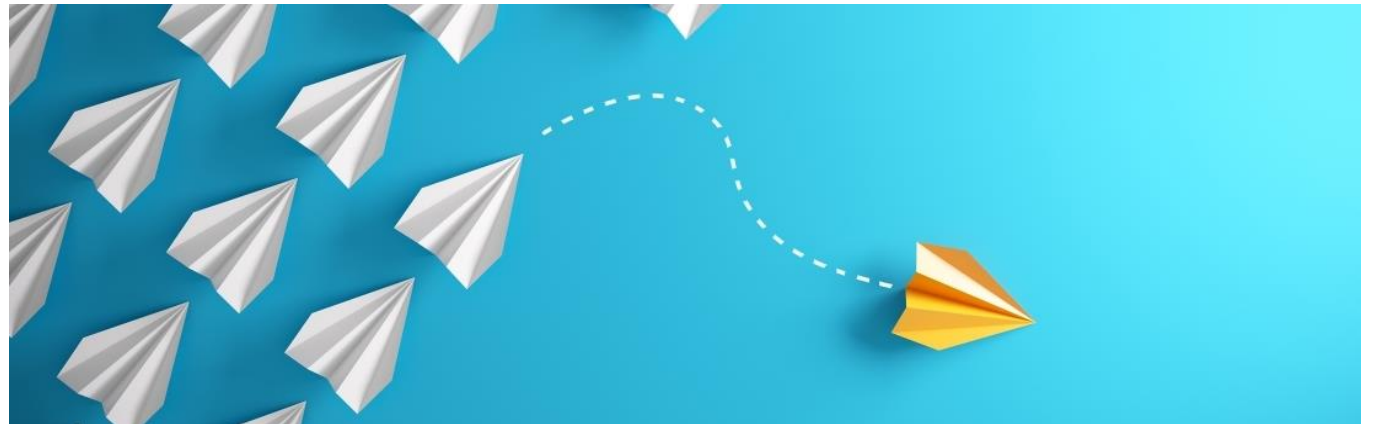
UNIVERSITY OF
KWAZULU-NATAL
INYUVESI
YAKWAZULU-NATALI



Sida

Transformative adaptation

- **Changes the fundamental attributes of a 'socio-nature'**
- **Compared with incremental - changes (tweaks) to the current system.**
- **Address underlying causes of risk to tackle root causes of vulnerability (e.g. inequality)**
- **Questioning assumptions about power, interests, and identities, including our own (O'Brien 2012)**





Better understand the pathways to transformative adaptation in southern African cities as a response to climate change that promotes supports the implementation of SDGs



- **What does transformative adaptation look like in southern African cities?**
- **Are there potentially transformative interventions in Durban and Harare?**
- **What are the historical pathways of these interventions (influences, barriers and opportunities)?**
- **How might these interventions be more transformative?**

**Social science (climate
adaptation/ governance)**

**Psychology &
social**

**Knowledge
and
relationships
to support
transformativ
e adaptation**

**Social studies
and
development**

Ecology

City of Harare

**Zimbabwe National
Water Authority
(ZINWA)**

**Harare Residents
Association**

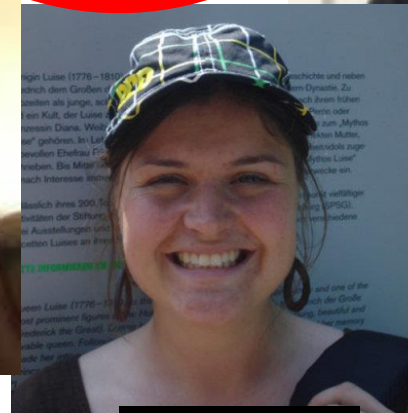
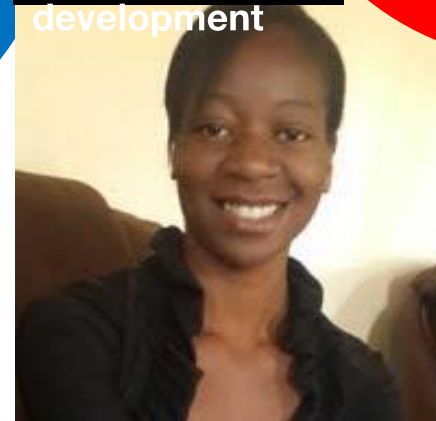
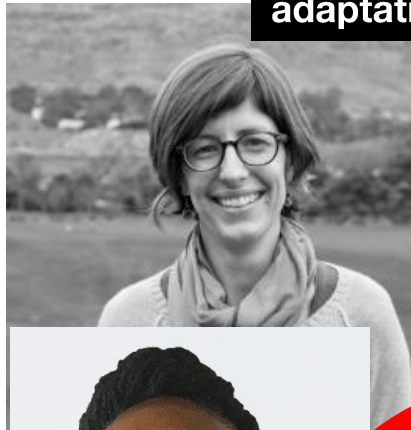
Private Sector?

eThekweni Municipality

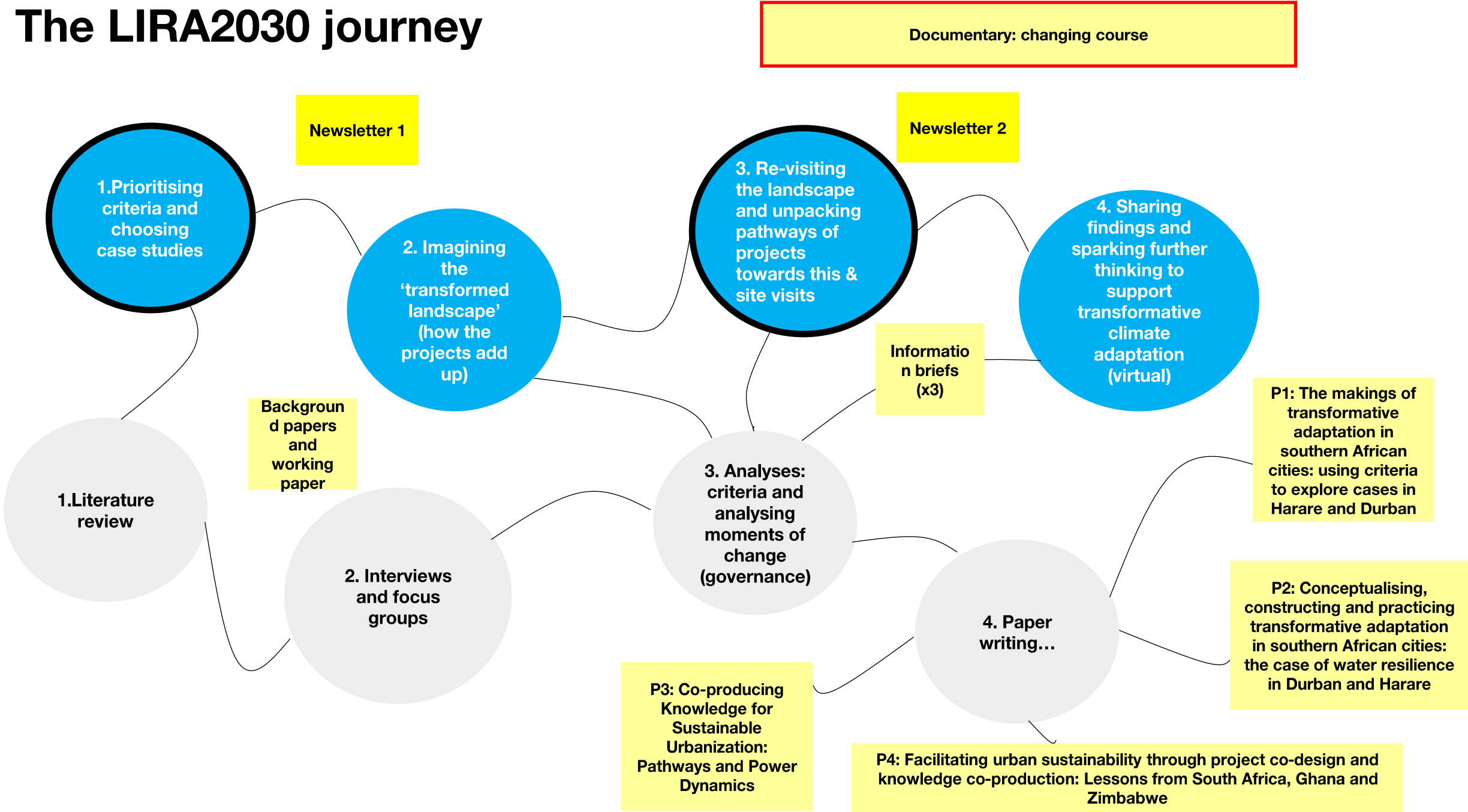
**Local community
organisations**

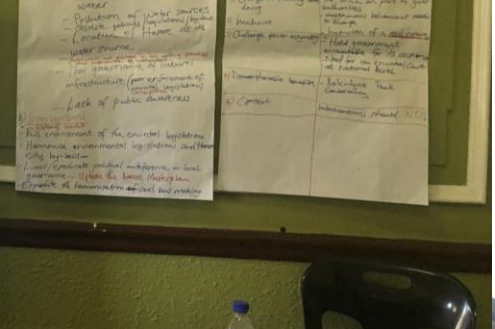
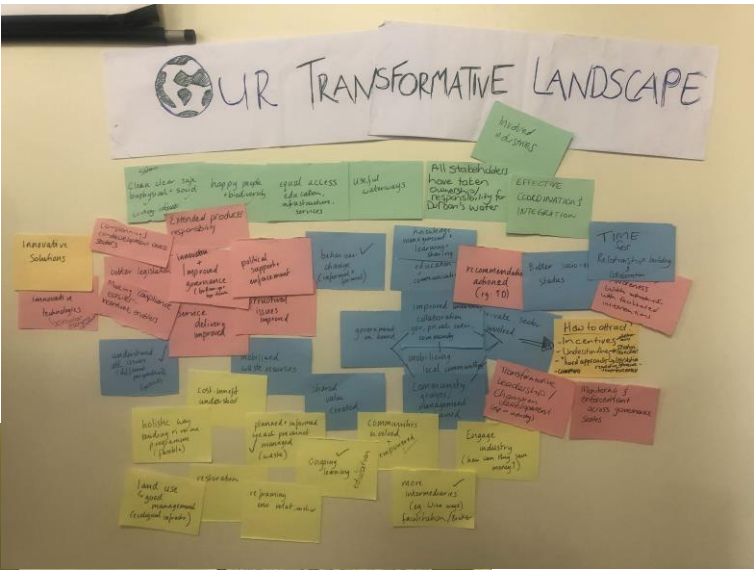
**Water & Sanitation
Department**

Private Sector?



The LIRA2030 journey





Change in the situation

- Relationships in Durban and Harare (university and local partner)
- LIRA2030 'principles' integrated into ToR for ongoing work in Durban (TRMP)
- Supporting establishment of CC desk in Harare; TRMP 'model' budgeted
- *New networks of young TD experts & better, more collaborative researchers*

Stocks and flows of knowledge

- Knowledge for researchers and societal stakeholders on transformative adaptation
- New channels of communication (relationships)
- Working papers specific to Durban, Harare and more generally for Southern African cities
- Learning lab reports
- Documentary (shared at the launch of the Durban Adaptation Plan (3 September))
- Annual newsletters
- 4 x academic articles (hopefully 5)

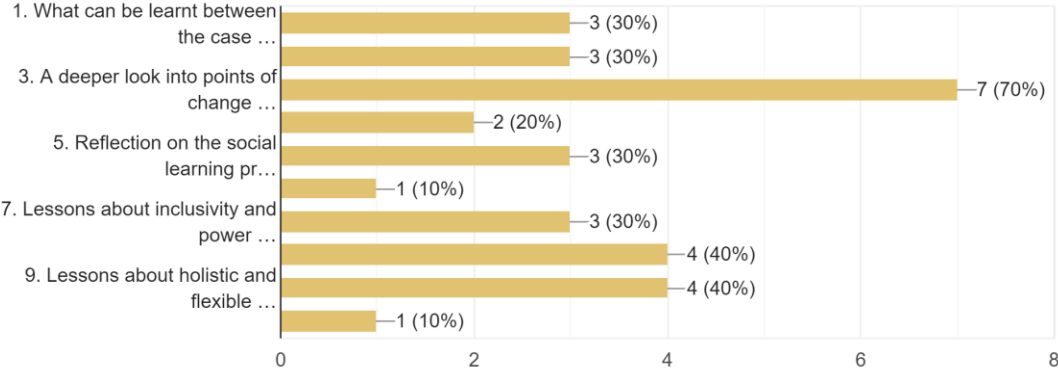
Mutual and transformative learning

- 'Aha' moments across participants of the complexity of these issues (multiple drivers of risk, multiple benefits from interventions, working towards one goal)
- New, longitudinal perspectives of interventions
- Risks manifest differently in areas, and various responses required: Harare talkshow at Durban LL
- Seeing risks first hand on site visits
- Understanding other perspectives better

**Outcome Spaces Framework
Mitchell et al. (2015)**

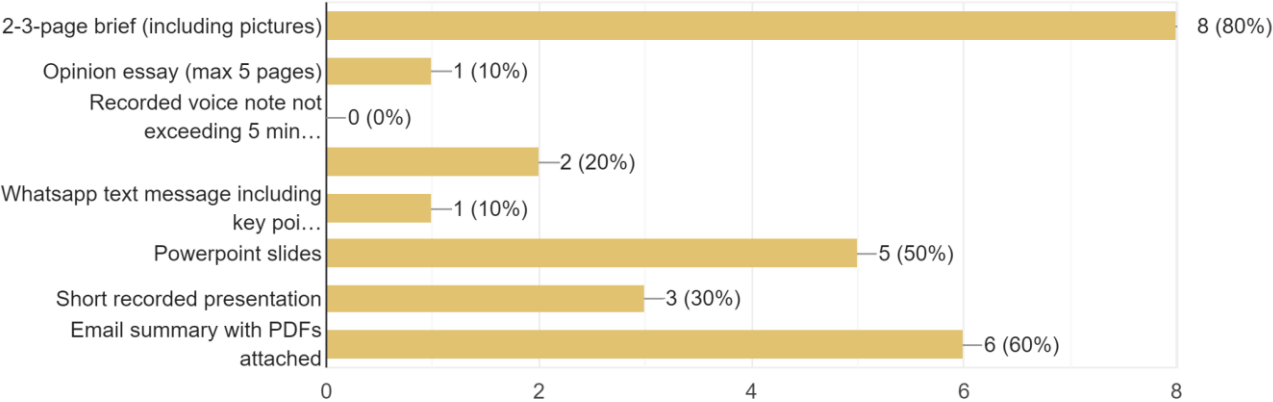
Please select up to three of options from the knowledge themes below, which you consider most useful (see the document attached to the email to r...free to suggest a theme that you think is missing.

10 responses



Please select up to three formats for effectively sharing knowledge products leading up to the 4th lab.

10 responses



The future...

- knowledge integrated into policy and planning
- People connected (MoU)
- Deeper curiosity from research team on various aspects including synergies/trade-offs towards transformation & the SDGs
- Network of expertise (immediate and broader to take work forward)
- ...



<https://whatnextglobal.org/shout-out-to-banksy/>

References

- Mitchell, C., Cordell, D., & Fam, D. (2015). Beginning at the end: The outcome spaces framework to guide purposive transdisciplinary research. *Futures*, 65, 86–96.
<https://doi.org/10.1016/J.FUTURES.2014.10.007>
- O'Brien, K. (2012). Global environmental change II: From adaptation to deliberate transformation. *Progress in Human Geography*, 36(5), 667–676.
<https://doi.org/10.1177/0309132511425767>