



国家自然科学基金
基金委员会
National Natural Science
Foundation of China

The Second Global Forum of Funders , 26-28 April 2021
Supporting Mission-Oriented Science For Global Sustainability:
What Does It Mean In Practice?

Mission-Oriented Science for Global Sustainability

A New Roadmap

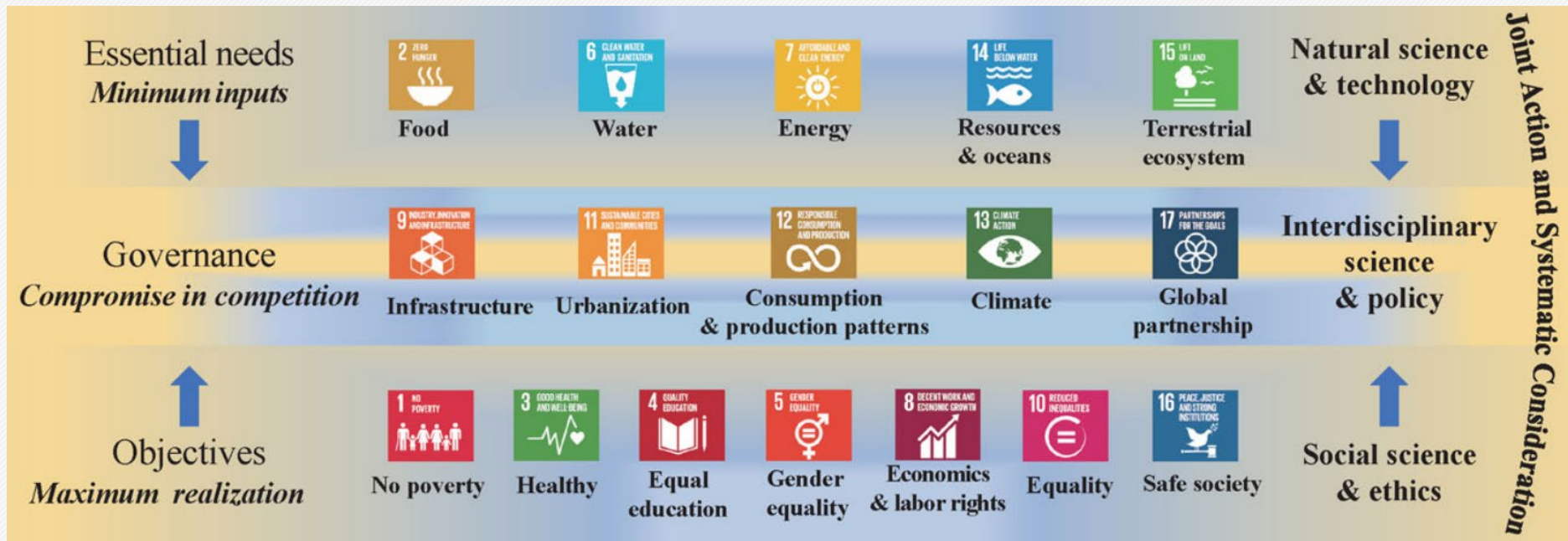
Jinghai Li

lijh@nsfc.gov.cn

National Natural Science Foundation of China

1. Formulating the Complexity behind 17 SDGs

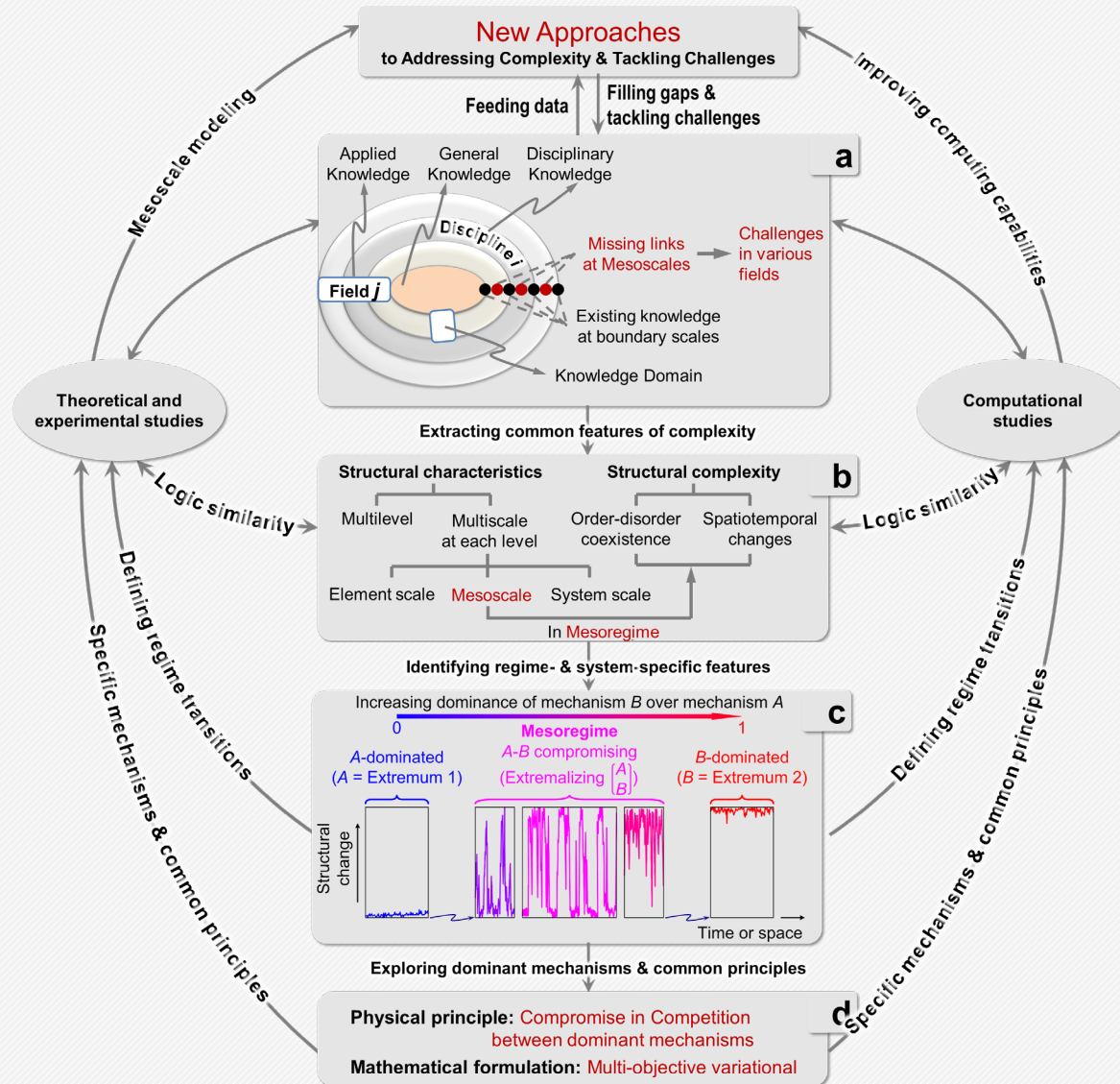
The 17 SDGs include 169 specific targets. How to apply the system science to the complexity in SDGs?



Bojie Fu, Shuai Wang, Junze Zhang, Zengqian Hou, Jinghai Li. Unravelling the complexity in achieving the 17 sustainable-development goals. *National Science Review*, 2019, 6(3): 386-88.

2. A Roadmap for Complexity Research

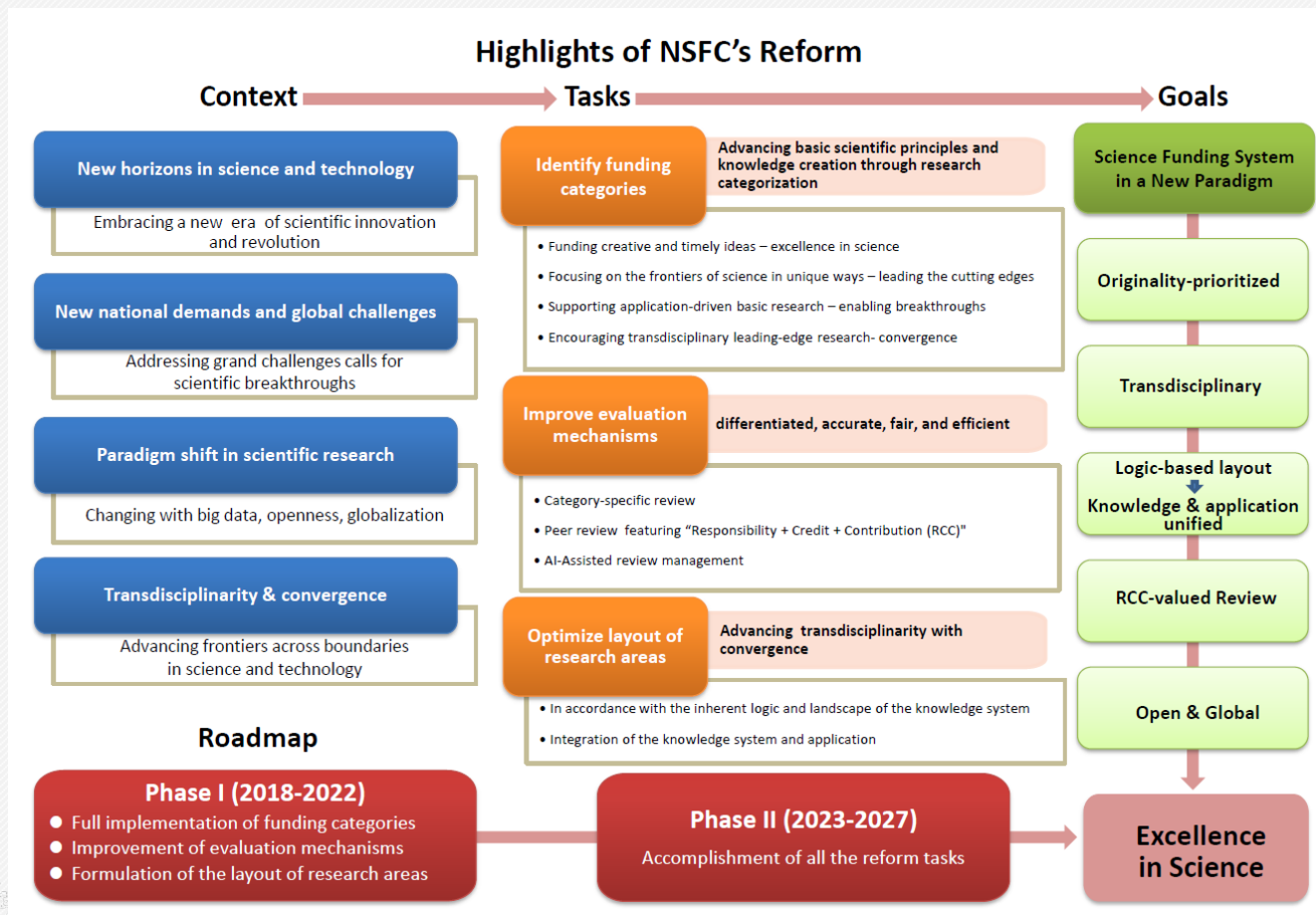
—Multilevel, Multiscale, Complexity at each Mesoscale



Jinghai Li, Wen Lai Huang, Jianhua Chen. Possible roadmap to advancing the knowledge system and tackling challenges from complexity. *Chemical Engineering Science*, 2021, 237:116548.

3. The Key to Support Mission-oriented Research

- Category-specific application and evaluation
- Identification of the scientific problems behind challenges
- Transdisciplinarity & Commonality & Diversity



Zhonghe Zhou, Weijie Zhao. Funding System Reform for Excellence in Science: An Interview with Jinghai Li, President of NSFC. National Science Review, vol. 6, no. 1 (2019): 177-81.

4. NSFC International Program on SDGs

NSFC is preparing to launch **the International Scientific Program on Sustainable Development:**

■ Bilateral and Multilateral

- Co-funding with other agencies or international organizations
- Joint Research/Workshops/Talent Fostering/Exchange Programs

■ Commonality & Diversity

- Global common interest
- Diversity → Difference

{	• Scientific issues related to the 17 goals
	• Regions & Countries
	• Inclusiveness & integration

■ Partnership

- Establishing platforms for cooperation to promote the sustainable development



Contact person: zouly@nsfc.gov.cn



Thank you!

