

High HIV rates still in young women in Africa: *Highest priority for global HIV control*



ORIGINAL ARTICLE

Prevalence of HIV, HSV-2 and pregnancy among high school students in rural KwaZulu-Natal, South Africa: a bio-behavioural cross-sectional survey

Quarraisha Abdool Karim,^{1,2} Ayesha B M Kharsany,¹ Kerry Leask,¹ Fanelisibonge Ntombela,¹ Hilton Humphries,¹ Janet A Frohlich,¹ Natasha Samsunder,¹ Anneke Grobler,¹ Rachael Dellar,¹ Salim S Abdool Karim^{1,2}

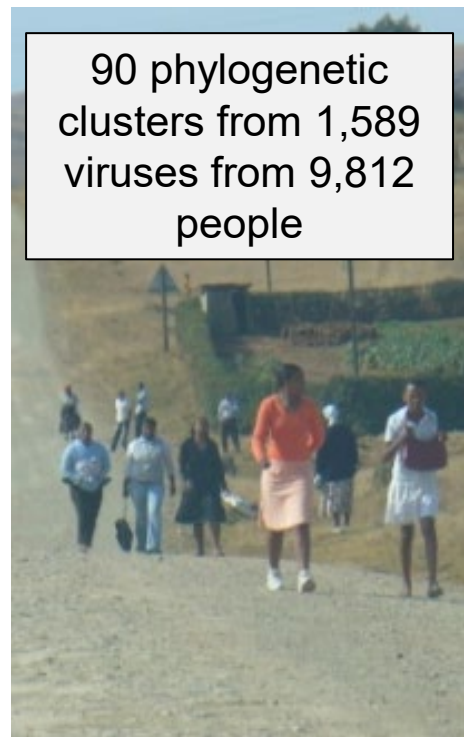
Age Group (years)	HIV prevalence in boys & girls (Grades 9-10) % (95% Confidence Interval)	
	Male (n=1252)	Female (n= 1423)
≤15	1.0 (0.0 - 2.2)	2.6 (1.2 - 4.0)
16-17	1.1 (0.2 - 2.0)	6.1 (2.6 - 9.6)
18-19	1.5 (0 - 3.7)	13.6 (9.0 - 18.1)
≥20	1.8 (0 - 3.9)	24.7 (6.3 - 43.1)

HIV phylogenetics reveals “Cycle of HIV Transmission”

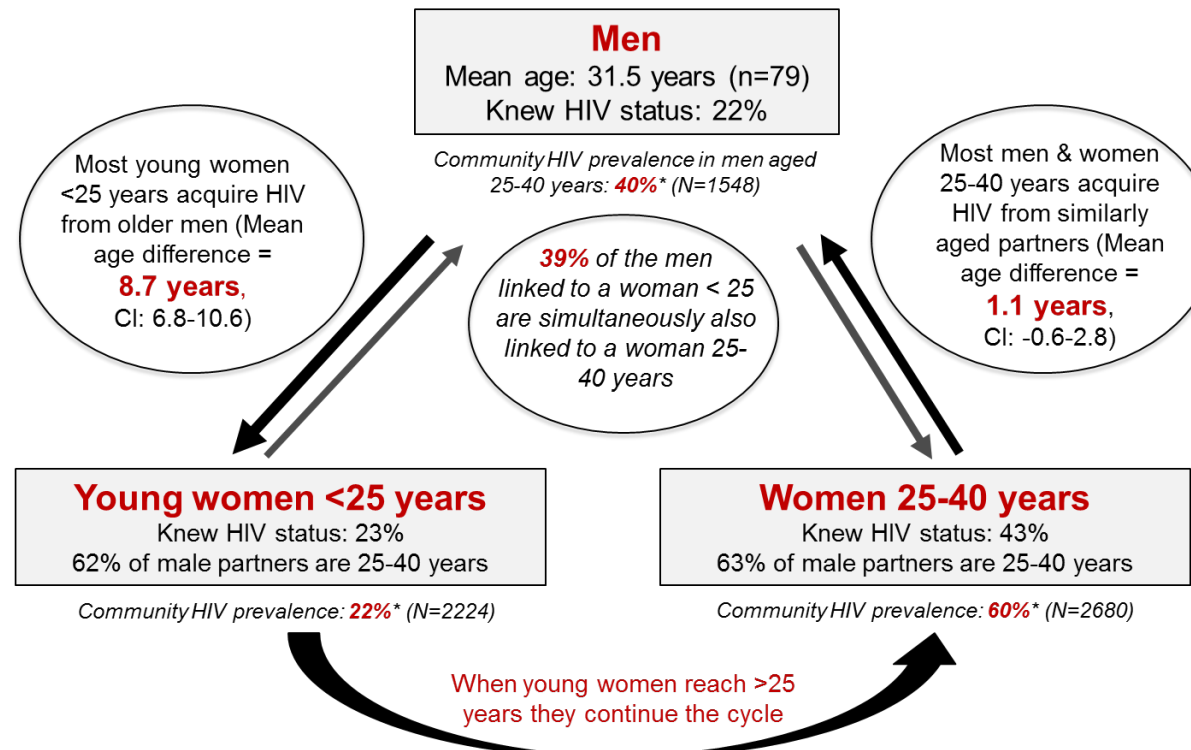
THE LANCET
HIV

Transmission networks and risk of HIV infection in KwaZulu-Natal, South Africa: a community-wide phylogenetic study

Tulio de Oliveira*, Ayesha B M Kharsany*, Tiago Gräf, Cherie Cawood, David Khanyile, Anneke Grobler, Adrian Puren, Savathree Madurai, Cheryl Baxter, Quarraisha Abdool Karim, Salim S Abdool Karim



90 phylogenetic clusters from 1,589 viruses from 9,812 people



Impacting policy on HIV prevention in Africa

Get on the Fast-Track

UNAIDS

The life-cycle approach to HIV

Finding solutions for everyone at every stage of life

Key populations

UNAIDS | 2016



Transmission networks and risk of HIV infection in KwaZulu-Natal, South Africa: a community-wide phylogenetic study

THE LANCET HIV

Tulio de Oliveira*, Ayesha B M Kharsany*, Tiago Graf, Cherie Cawood, David Khanyile, Anneke Grobler, Adrian Puren, Savathree Madurai, Cheryl Baxter, Quarraisha Abdoal Karim, Salim S Abdoal Karim

Men
Mean age 31.5 years (n=79)
17/79 (22%) knew HIV status
Community HIV prevalence in men aged 25-40 years: 644/1548 (40%*)

Women 25-40 years
24/56 (43%) knew HIV status
58/92 (63%) of male partners are 25-40 years
Community HIV prevalence: 1758/2835 (60%*)

Young women <25 years
10/43 (23%) knew HIV status
37/60 (62%) of male partners are 25-40 years
Community HIV prevalence: 567/2224 (22%*)

Most young women <25 years acquire HIV from older men (mean age difference 8.7 years, 95% CI 6.8-10.6)

16/41 (39%; 95% CI 24-54) men linked to a woman <25 years are simultaneously linked to a woman 25-40 years

Most men and women 25-40 years acquire HIV from similarly aged partners (mean age difference 1.1 years, 95% CI -0.6 to 2.8)

When young women reach >25 years they continue the cycle

Men (25-40 years old)
HIV prevalence: 40%

Young Women (under 25 years old)
HIV prevalence: 22%

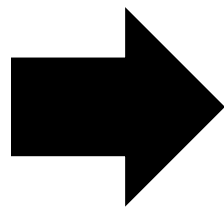
Women (25-40 years old)
HIV prevalence: 60%

Most HIV transmission is likely from higher prevalence partners: 25-40 years old to lower prevalence partners: 25-40 years old to lower prevalence women under 25 years old

Among men linked to young women (n=22), 20% were simultaneously linked to a 25-40 year-old woman

TIME
As women age, the cycle repeats

UNAIDS



LET OUR ACTIONS COUNT

SOUTH AFRICA'S NATIONAL STRATEGIC PLAN ON HIV, TB and STIs 2017-2022

INFECTION PATHWAY

Very young women acquire HIV from men, on average, 8 years older

High HIV incidence men mean age 27 years (range 23-35 years)

Men and women > 24 years usually acquire HIV from similarly aged partners

High HIV risk women mean age 18 years (range 16-23 years)

High HIV prevalence women mean age 26 years (range 24-29 years)

Time
Cycle repeats itself

Supporting WHO & UNAIDS with science advice

Special Adviser on pandemics to the Director-General of WHO and WHO Science Council member – *Salim Abdool Karim*



Co-Chair of the Committee providing Science Advice to the current Executive Director of UNAIDS – *Quarraisha Abdool Karim*



UNAIDS Scientific Expert Panel - *Salim Abdool Karim* appointed Chair and *Quarraisha Abdool Karim* appointed as a member

